



Indian

Indian
MOTORCYCLE

2003 CHIEF

WE'VE STARTED SOMETHING BIG. NOW IT'S YOUR TURN.

IT BEGAN 103 YEARS AGO. OSCAR HEDSTROM, AN INGENUOUS INVENTOR, AND GEORGE HENDEE, A CHAMPION BICYCLE RACER, GAVE TO AMERICA A NEW KIND OF FREEDOM. THEY CREATED AMERICA'S FIRST MOTORCYCLE. AND ON THE WAY, STARTED A MOVEMENT THAT CHANGED THE WORLD.

NOW, MORE THAN A CENTURY AFTER THAT FIRST INDIAN® MOTORCYCLE HIT THE ROAD, WE'RE CHANGING THE WORLD AGAIN. WE'RE BRINGING THOSE LEGENDARY MOTORCYCLES BACK TO LIFE—THE MOTORCYCLES THAT CAPTURED THE WORLD'S IMAGINATION. AND WE'RE DOING IT WITH THE SAME COMMITMENT TO SOUL-STIRRING PERFORMANCE, HANDCRAFTED QUALITY AND ADVANCED TECHNOLOGY THAT HAVE MADE THE INDIAN BRAND WORLD-RENOUNDED SINCE 1901.

AS THE TOP OF THE INDIAN MOTORCYCLE'S LINEUP, THE INDIAN CHIEF® IS A ROLLING DECLARATION OF EVERYTHING WE STAND FOR. WE CONCEIVED AND BUILT ITS ALL-AMERICAN, ALL-INDIAN POWERPLUS™ 100 ENGINE TO DELIVER THE MASSIVE TORQUE AND HEART-POUNGING POWER A MACHINE LIKE THIS DESERVES. WE BUILT ITS COMPUTER-DESIGNED CHASSIS TO MAKE IT AS EASY TO HANDLE AS IT IS TO LOOK AT. WE MADE IT A SHOWPIECE OF MODERN TECHNOLOGY—AND A TRIBUTE TO THE LEGENDARY CHIEFS OF THE PAST.

FROM THE EXCITING NEW CHIEF VINTAGE, WITH ITS AUTHENTIC '40S APPEAL TO THE STUNNING CHIEF DELUXE AND THE FULL LINE UP OF OTHER CHIEF MODELS, EACH IS DESIGNED TO REFLECT THE SOUL OF INDIAN MOTORCYCLES—AND TO KICKSTART THE HEART OF ITS FORTUNATE OWNER.

Indian®





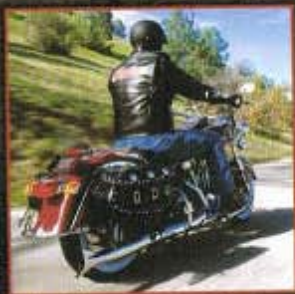
**CHECK OUT OUR
COMPLETE LINE OF
CUSTOM ACCESSORIES
FOR YOUR CHIEF®**

NOW AVAILABLE IS A COMPREHENSIVE SELECTION OF ALL-NEW INDIAN® MOTORCYCLE PRODUCTS AND ACCESSORIES—FROM FUEL INJECTION TO AIR FILTERS, LOWERING KITS TO FENDER TIPS. FIND ALL THE ITEMS TO MAKE YOUR CHIEF UNIQUELY YOURS, STARTING ON PAGE 16.



Motorcycle shown with factory equipment and optional accessories.

EVERYTHING GREAT ABOUT AMERICA SUMMED UP IN TWO WHEELS.



INTRODUCING THE ALL-NEW CHIEF VINTAGE MOTORCYCLE. FROM THE CHROME-TIPS OF ITS SWOOPING FENDERS TO ITS VINTAGE-CUT WINDSHIELD AND HANDCRAFTED LEATHER SADDLEBAGS, THE CHIEF VINTAGE IS INSPIRED BY THE LEGENDARY INDIAN MOTORCYCLES OF THE PAST. AND THE ALL-AMERICAN, ALL-INDIAN POWERPLUS™ 100 ENGINE, COMPUTER-DESIGNED FRAME, BREMBO BRAKES AND BULLETPROOF ENGINEERING ARE THE FOUNDATION THAT MAKES THE INDIAN CHIEF AS MUCH OF A LEGEND IN THIS CENTURY AS IT WAS IN THE LAST. CLIMB ABOARD AND LET THE PURSUIT OF HAPPINESS BEGIN.

CHIEF VINTAGE FEATURES

- **Chrome aluminum fender tips.** Classic form, protective function.
- **Vintage-cut windshield.** The look gets to you. The bugs don't.
- **Authentic chrome horn cover.** Retro style that speaks volumes.
- **Front/rear chrome engine guards.** Dedicated to the one you love.
- **Leather seat, saddlebags.** Handcrafted for long-range comfort.
- **Polished aluminum luggage rack.** Rack 'em up.
- **Fishtail style muffler.** One look and you're hooked.





Jet Black



Century Red



A STREETBIKE NAMED DESIRE.



WE SWEATED EVERY DETAIL OF THE CHIEF® MODEL, FROM ITS DEEP-VALANCED FRONT FENDER TO THE COMFORTABLE CURVE OF ITS NEW SWEEP-BACK HANDLEBAR. ITS HEART IS THE POWERPLUS™ 100 ENGINE—AN AMERICAN POWERHOUSE DESIGNED TO DELIVER PLENTY OF TORQUE AND OUTSTANDING ROLL-ON PERFORMANCE. IT RIDES ON BEEFY

60-SPOKE CHROME WHEELS AND SLOWS WITH WORLD-FAMOUS BREMBO BRAKES. ITS HIGH-STRENGTH, HIGH-TECH CHASSIS USES A PRECISE, GERMAN-MADE KW MONOSHOCK FOR SURE CORNERING AND GREAT STRAIGHT-LINE STABILITY. ITS LOOK IS SIMPLY TIMELESS—JUST WHAT YOU'D EXPECT FROM AMERICA'S ORIGINAL MOTORCYCLE.

CHIEF FEATURES

- **Powerplus™ 100 engine.** Big-inch power, big-time torque.
- **Computerized ignition.** No guesswork, no maintenance.
- **High-strength CAD-CAM designed steel frame.** In-town agility, long-haul stability.
- **Brembo brakes.** From Formula 1 to Highway 1.
- **Show quality chrome and polished trim.** The custom look comes standard.
- **German KW shock.** Precision built, precision ride.





Jet Black



Volcano Red Metallic



Cobalt Blue Metallic

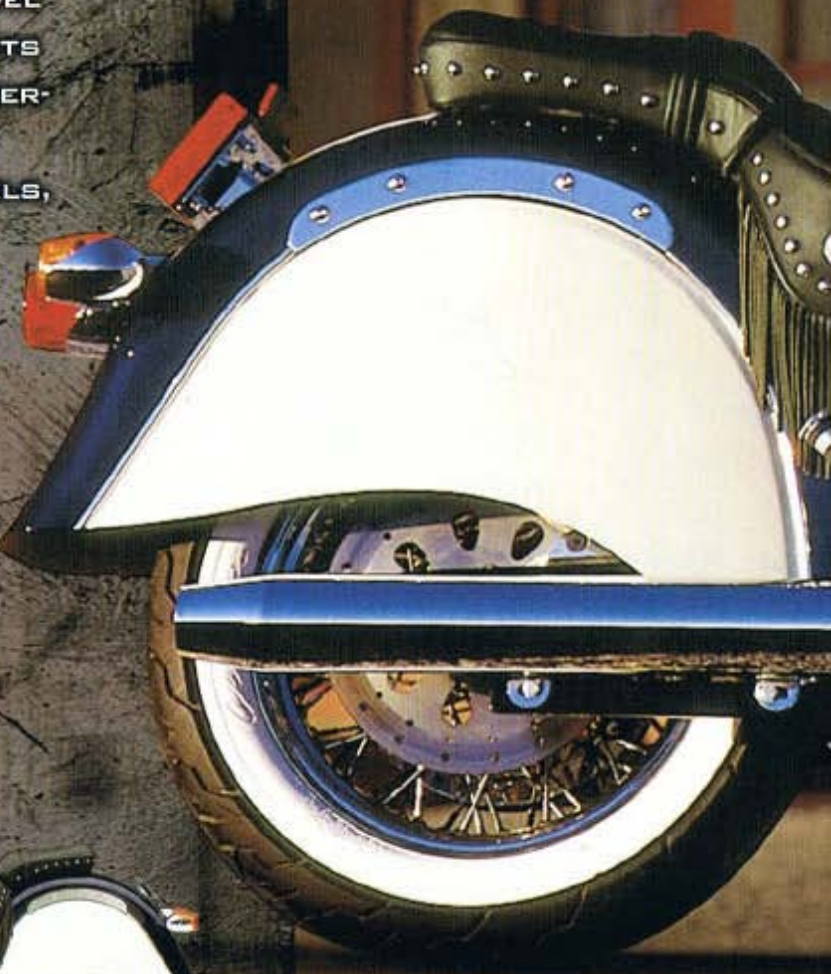
WE READ YOUR MIND. NOT TO MENTION YOUR HEART.



DESIGNING THE CHIEF® DELUXE WAS EASY. WE DRESSED UP THE CHIEF THE WAY WE'D LIKE IT OURSELVES—AND THEN BUILT JUST A FEW MORE. IT HAS ALL THE IMPRESSIVE TECHNOLOGY THAT MAKES THE CHIEF MODEL SUCH AN ENGINEERING STANDOUT, FROM ITS POWERPLUS™ 100 ENGINE TO ITS COMPUTER-DESIGNED CHASSIS. WE KEPT THE CHIEF'S ERGONOMIC NEW PULLBACK HANDLEBAR, THE 60-SPOKE, 16-INCH CHROME WHEELS, THE GLEAMING CHROME AND THE POLISHED ALUMINUM. WE ADDED TRADITIONAL WHITEWALL TIRES AND CLASSIC NEW TWO-TONE PAINT SCHEMES. NOT TO MENTION A FRINGED DUAL SEAT—BECAUSE A MACHINE THIS SPECIAL IS TOO GOOD NOT TO SHARE.

CHIEF DELUXE FEATURES

- **Fringed dual seat.** You can take her with you.
- **Classic whitewall tires.** Authentic 1950s style.
- **Classic two-tone paint schemes.** Some things are too good to change.
- **Powerplus™ 100 engine.** Big-inch power, big-time torque.
- **Brembo brakes.** From Formula 1 to Highway 1.





Jet Black /
Volcano Red Metallic



Deep Red /
Vanilla Cream



Copper Metallic /
Jet Black



Blackberry Metallic /
Jet Black



Jet Black /
Pearl White



Cobalt Blue Metallic /
Pearl White

CELEBRATING THE HERITAGE OF AMERICA'S ORIGINAL MOTORCYCLE.



IT ALL STARTED IN SPRINGFIELD, MASSACHUSETTS, 103 YEARS AGO. AND THIS SPECIAL CHIEF® MODEL COMMEMORATES THE LOOK AND WORLD-ROCKING PERFORMANCE OF THOSE BEAUTIFUL FIRST INDIAN® MODELS. LIKE MANY EARLY INDIAN MOTORCYCLES, THE CHIEF SPRINGFIELD COMES IN A MONOCHROME PAINT SCHEME, WITH THE

CLASSIC GOLD SCRIPT TANK LOGO FIRST SEEN IN 1910, SURROUNDED BY RICH GOLD PINSTRIPE—A DESIGN UNVEILED ON THE 1917 INDIAN POWERPLUS. A SLEEK SOLO SEAT, 16-INCH, 60-SPOKE WIRE WHEELS AND TRADITIONAL BLACKWALL TIRES COMPLETE THE NOSTALGIC PRE-WAR—WORLD WAR ONE, THAT IS—MOTIF.

CHIEF SPRINGFIELD FEATURES

- **Gold script logo and pinstripes.** Legendary Springfield look.
- **Traditional blackwall tires.** Same as it ever was.
- **Powerplus™ 100 engine.** Big-inch power, big-time torque.
- **High-strength CAD-CAM designed steel frame.** In-town agility, long-haul stability.
- **Brembo brakes.** From Formula 1 to Highway 1.
- **German KW shock.** Precision built, precision ride.





Jet Black



Deep Red

HIT THE ROAD JACK. AND COME BACK WHENEVER YOU FEEL LIKE IT.



TEMPTING THOUGH IT IS TO JUST STARE AT THE CHIEF® ROADMASTER, THAT'S NOT WHAT IT'S FOR. IT'S DESIGNED TO GRAB YOU BY THE HEART AND PULL YOU STRAIGHT OVER THE NEXT HORIZON. THE POWERPLUS™ 100 ENGINE PROVIDES THE URGE, AND THE HIGH-TECH CHIEF CHASSIS, WITH ITS GERMAN-MADE KW MONOSHOCK AND GRIPPY BREMBO BRAKES, POINTS ALL THAT URGE IN THE RIGHT DIRECTION. ERGONOMIC NEW PULLBACK BARS KEEP YOU COMFORTABLE ALL DAY LONG. INDIAN-EXCLUSIVE SADDLEBAGS, A CHROME PASSENGER BACKREST AND A PROTECTIVE WINDSHIELD ENCOURAGE YOU TO HEAD FOR THE HILLS. REVEALING WHEN YOU'LL BE BACK—WELL, THAT'S UP TO YOU.

CHIEF ROADMASTER FEATURES

- **Heavy-duty Lucite® windshield.** Long-haul weather protection.
- **Custom fringed saddlebags.** You can take it with you.
- **Fringed dual seat.** You can take her, too.
- **Chrome passenger backrest.** Lean back and enjoy it.
- **Classic whitewall tires.** Authentic 1950s style.
- **Brembo brakes.** From Formula 1 to Highway 1.





Jet Black



Volcano Red Metallic



Cobalt Blue Metallic



Jet Black /
Volcano Red Metallic



Deep Red /
Vanilla Cream



Copper Metallic /
Jet Black



Blackberry Metallic /
Jet Black



Jet Black /
Pearl White



Cobalt Blue Metallic /
Pearl White

A 100-CUBIC-INCH HEART. AND OVER A CENTURY OF SOUL.

EVERY INDIAN® CHIEF® MOTORCYCLE IS POWERED BY OUR OWN FACTORY DESIGNED AND BUILT POWERPLUS™ 100 ENGINE—THE SOUL-STIRRING POWERPLANT THAT EVOKES THE LOOK OF CLASSIC INDIAN MOTORCYCLES OF THE PAST, BUT WITH ALL THE ADVANCED TECHNOLOGY AND AEROSPACE PRECISION OF TODAY. ITS 100 CUBIC INCHES GIVE IT THE THUNDERING TORQUE AND EYE-OPENING ROLL-ON POWER YOU CRAVE. AND ITS LOOK DELIVERS THE STYLE THAT ADDS TO THE INDIAN LEGEND WITH EACH UNFOLDING MILE.

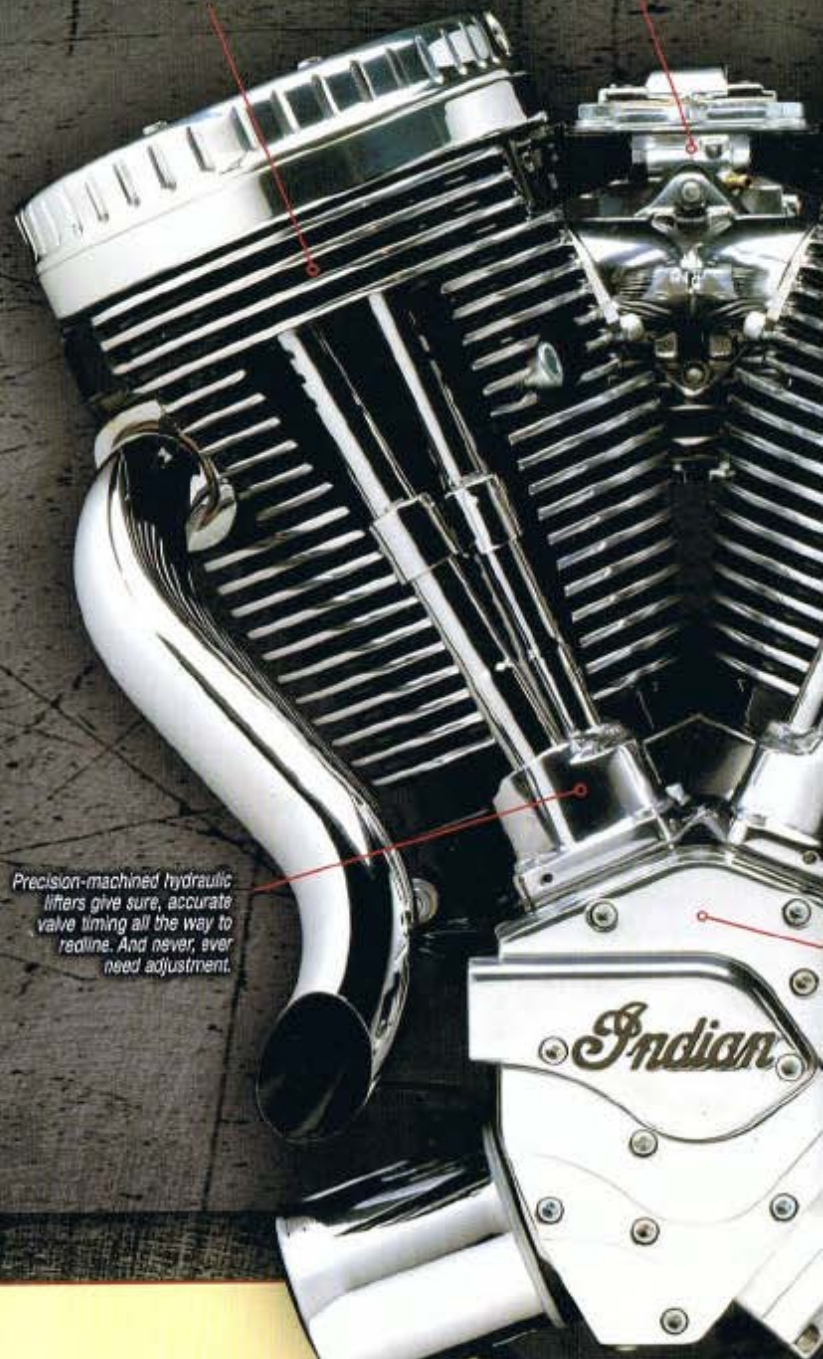
THE LOOK IS OLD-SCHOOL. BUT THERE'S NOTHING RETRO ABOUT THE ENGINEERING. SPECIAL FORGED, H-SECTION CONNECTING RODS—THE KIND USED IN 850-HORSEPOWER V8S—GIVE ITS BOTTOM END AMAZING STRENGTH. A 42MM FLAT-SLIDE MIKUNI CARB, MOUNTED ON THE LEFT IN TRADITIONAL INDIAN FASHION, IS USED FOR ONE SIMPLE REASON: IT'S THE BEST. COMPUTER-CONTROLLED ELECTRONIC IGNITION DELIVERS A HOT SPARK EXACTLY WHEN IT IS NEEDED AND THE CRISP, FIVE-SPEED GEARBOX FEEDS ALL THAT DELICIOUS POWER TO THE ANXIOUS PAVEMENT.


WHEN WE WERE DONE BUILDING IT, WE DID ONE MORE THING: WE PUT IT TO THE TEST. WE PUT IT THROUGH A STEADY-STATE LOAD TEST AND A 50,000-MILE TEST CELL DYNO SIMULATION THAT PUT THE ENGINE THROUGH OVER 5,000 HEAT CYCLES. WE RACKED UP TENS OF THOUSANDS OF MILES IN THE HILLS OF TENNESSEE, THE WILDS OF TEXAS AND THE BAKING DESERTS OF ARIZONA. WE LEARNED A LOT ALONG THE WAY. MAINLY, THAT THIS IS ONE TOUGH ENGINE. SO TOUGH, IN FACT, THAT SAM WHITE WILL BE SCORCHING THE RACETRACK THIS SEASON WITH HIS POWERPLUS™ 100 EQUIPPED INDIAN CHIEF, COMPETING IN THE AHRA HOT STREET CLASS.

100 big, beautiful cubes, from a 3 7/8" bore and 4 1/4" stroke. It all adds up to monster low-end torque and right-now roll-on performance.

The left-side-mounted 42mm flat-slide Mikuni carburetor delivers world-class throttle response. Not to mention soul-stirring flat-out power.

Precision-machined hydraulic lifters give sure, accurate valve timing all the way to redline. And never, ever need adjustment.





The round-bore aluminum cylinders are cast around waffle-patterned steel liners, for optimum heat transfer and bulletproof reliability.

IT'S A LONG ROAD AHEAD. BUT THERE'S NO REASON IT HAS TO FEEL THAT WAY.

THE CHIEF[®] MOTORCYCLE HAS A HUGE HEART AND A RIGHTEOUS SOUL. ITS HANDLING MANNERS ARE JUST AS STUNNING AS ITS STYLING, WITH THE PERFECT COMBINATION OF DOWNTOWN AGILITY AND DOWN-THE-ROAD STABILITY. WITH THIS KIND OF CHASSIS PERFORMANCE, YOU CAN TURN TWISTY ROADS INTO YOUR OWN PRIVATE PLAYGROUND. IT STARTS WITH A HELL-FOR-STRONG CAD-CAM DESIGNED, COORDINATE MEASURING MACHINE-INSPECTED BACKBONE. THE CHIEF CHASSIS WAS CREATED USING 3-D PARAMETRIC COMPUTER ASSISTED DESIGN TECHNIQUES AND FINITE ELEMENT ANALYSIS VERIFICATION. TRANSLATION: IT'S INCREDIBLY PRECISE AND EVERY BIT AS STRONG AS IT LOOKS. A 41MM PAIOLI FORK KEEPS THE FRONT WHEEL FIRMLY IN LINE AND A GERMAN-MADE KW SHOCK STRIKES THE PERFECT BALANCE BETWEEN COMFORT AND CONTROL. THE POWERPLUS™ 100 IS THE HEART OF THE CHIEF AND ONE LOOK AT ITS CHASSIS WILL TELL YOU WE'VE GOT OUR HEART IN THE RIGHT PLACE.

The frame is CAD-CAM designed, FEA verified and Coordinate Measuring Machine (CMM) inspected. In other words, it's really strong.

The rear suspension uses a high-quality, German-made KW shock and rising-rate geometry to give you precise handling and a smooth, let's-keep-on-going ride.

The backbone is made of square-section, high-strength, low-alloy tubing. So the new Chief goes exactly, precisely, where you point it.

The swingarm combines an investment-cast rear-shock cantilever and high-strength, low-alloy, 1" x 3" tubing. It's both light and strong, for impressive stability and confidence-inspiring road holding.

Multi-function, cast-steel engine mounts hold the Powerplus 100 firmly in place, adding to rigidity while they help ensure bulletproof reliability.

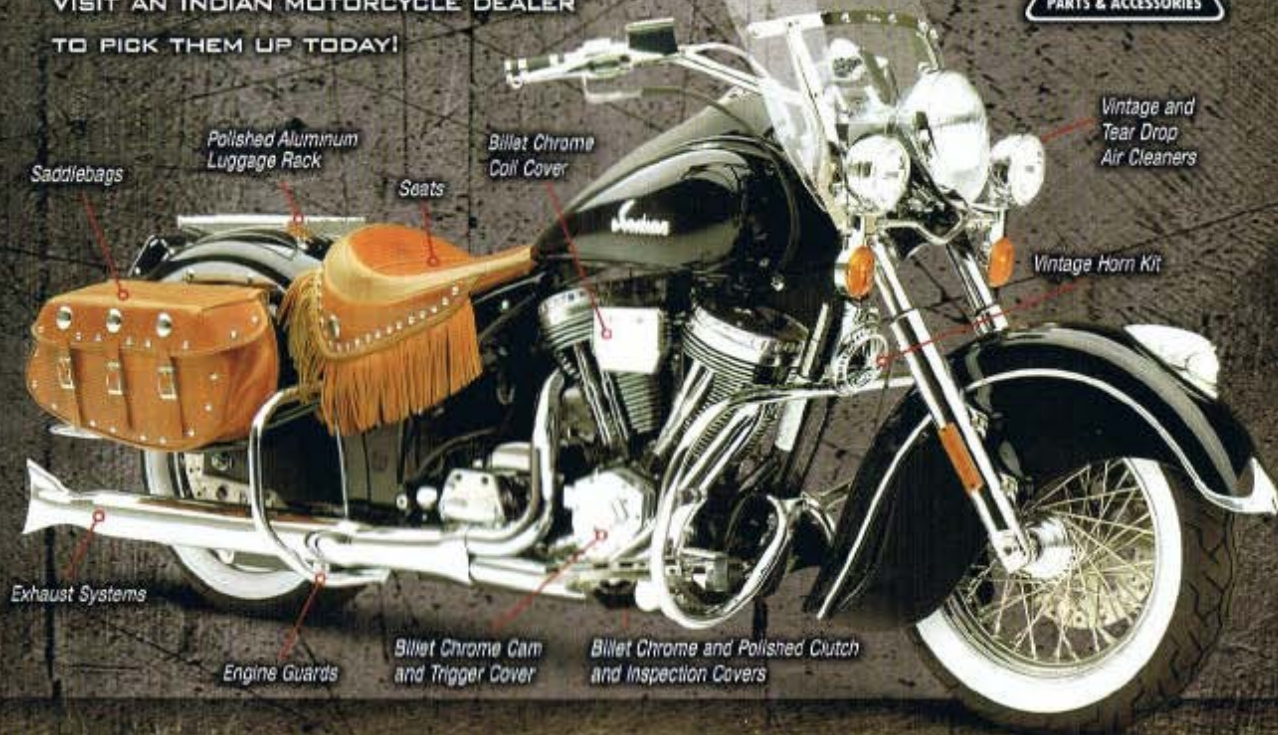
The flywheel and crankshaft weigh a massive 26 pounds. And the forged connecting rods, with their H-beam design, come straight from the racetrack.

It's not finished 'til it's finished. We use DuPont™ Powder-Prime coating process, with a wet, clear-coat finish for a glass-like surface and extreme durability. Then we hand-inspect each and every Chief.

IT'S YOUR CHIEF. IT MIGHT AS WELL LOOK THAT WAY.

YOUR CHIEF IS UNIQUELY YOURS. TO SHOW YOUR TRUE INDIAN MOTORCYCLE CHARACTER WE'VE CREATED A COMPREHENSIVE SELECTION OF DISTINCTIVE INDIAN BRAND PRODUCTS, ACCESSORIES AND APPAREL ITEMS. FROM FUEL INJECTION TO EXOTIC PAINT TO CHROME AND BILLET PARTS AND SPECIAL PERFORMANCE AIR CLEANERS, EACH ITEM IS DESIGNED AND MANUFACTURED TO THE SAME EXACTING STANDARDS AS YOUR INDIAN MOTORCYCLE. PICK UP OUR 2003 APPAREL CATALOG FOR OUR FULL LINE OF JACKETS, T-SHIRTS, LEATHER PANTS AND OTHER AUTHENTIC INDIAN MOTORCYCLE RIDING GEAR.

ON THE NEXT FEW PAGES YOU'LL FIND THE ITEMS YOU'VE ALWAYS WANTED TO MAKE YOUR CHIEF TRULY UNIQUE. VISIT AN INDIAN MOTORCYCLE DEALER TO PICK THEM UP TODAY!



Saddlebags

Polished Aluminum Luggage Rack

Seats

Billet Chrome Coil Cover

Vintage and Tear Drop Air Cleaners

Vintage Horn Kit

Exhaust Systems

Engine Guards

Billet Chrome Cam and Trigger Cover

Billet Chrome and Polished Clutch and Inspection Covers



A. Warbonnet Billet Chrome Air Cleaner
Teardrop shaped air cleaner features Warbonnet logo, comes with new carburetor jets. For off-road use only.

A. 88-127 - \$299

B. Vintage Style Air Cleaner

Classic round air cleaner duplicates '40s-'50s look, with script Indian logo.

B. 88-140 - \$189

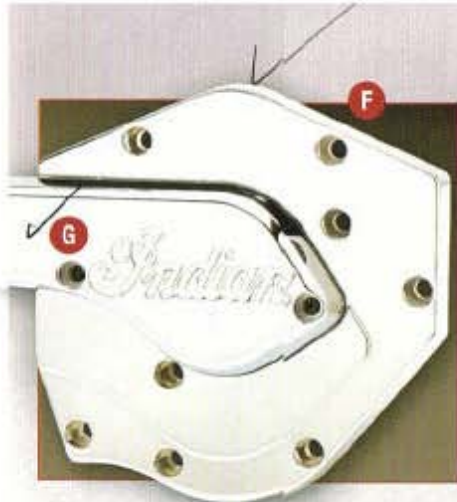
C.-E. Billet Chrome Shift Linkage

Shift linkage rod is chromed, billet aluminum with choice of Chief, Roadmaster or Indian logo.

C. 88-131 - \$109-Chief

D. 88-134 - \$109-Roadmaster

E. 88-135 - \$109-Indian logo



F, G. Billet Chrome Cam Cover and Cam Trigger

Chromed cam cover dresses up the Powerplus™ 100 engine dramatically.

F. 08-950 - \$249

G. 08-951 - \$199

H. Billet Chrome Rocker Base/Cover

Billet aluminum, show-quality chromed rocker base and cover enhances the look of your Powerplus™ 100 engine.

H. 08-953 - \$499-set for both cylinders



I-L. Chrome and Polished Clutch Covers and Inspection Covers

Chromed or highly polished aluminum clutch cover and matching inspection cover are available with Indian script, oval I, warbonnet, or spelled-out Indian Motorcycle Corporation logos.

I. 88-136 - \$149-Chrome, Polished 88-155 - \$129

J. 88-138 - \$149-Chrome, Polished 88-157 - \$129

K. 88-165 - \$149-Chrome, Polished 88-166 - \$129

L. 88-137 - \$149-Chrome, Polished 88-156 - \$129

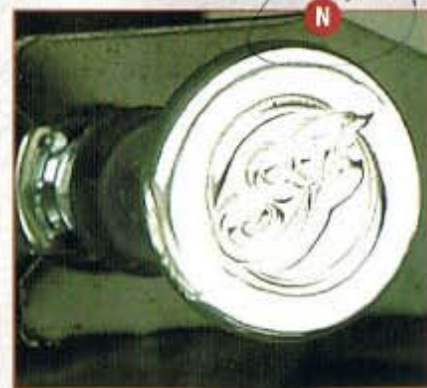
Matching Inspection Covers

I. 88-161 - \$99-Chrome, Polished 88-162 - \$89

J. 88-163 - \$99-Chrome, Polished 88-164 - \$89

K. 88-167 - \$99-Chrome, Polished 88-168 - \$89

L. 88-139 - \$99-Chrome, Polished 88-158 - \$89



M. Billet Chrome Coil Cover

Chrome coil cover showcases Indian oval I logo.

M. 88-128 - \$149

N. Billet Chrome Choke Knob

The Indian oval I logo completes the high-style look of this show-quality, chromed billet aluminum knob.

N. 88-130 - \$29



A. Billet Chrome Rear Passenger Floorboards
Rear passenger floorboards fold up when not in use, includes rubber inserts for added comfort.
A. 49-955 - \$249



B., C. Billet Chrome Forward Controls
Billet chrome forward controls with stylized levers give the Chief an extra dose of custom panache. Designed to work with standard Chief floorboards. Shown with optional billet chrome shifter/brake pedal tips.
B. 49-950 - \$789 - Billet Chrome Forward Controls
C. 49-953 - \$179 - Billet Chrome Shifter/Brake Pedal Tips

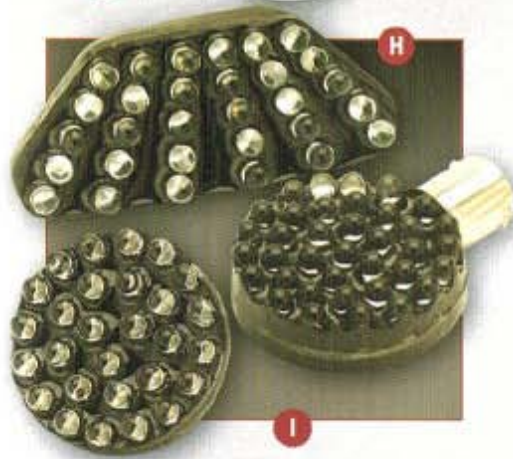


D. Billet Chrome Handlebar Mount Tachometer
Mount replaces handlebar riser cover, provides precise engine speed data for maximum performance.
D. 56-056 - \$399



E. Gold Plated Indian Head Fender Ornament
Your Chief will be as good as gold with this beautiful fender ornament.
E. 66-124 - \$79

F. LED License Plate Frame
Chromed, billet aluminum frame is backlit with red LED's for a distinctive, dramatic styling statement.
F. 67-002 - \$179



G. Chrome Belt Adjuster Bullet Tips, Pair
Chromed bullet covers conceal belt-adjusters at rear of swingarm.

G. 88-146 - \$59

H. LED Rear Light Set

This high-tech, LED taillight set includes brighter, more energy efficient brake, running and turn signal lights.

H. 67-000 - \$179

I. LED Front Light Set

Front LED lights complement LED taillights, include high-visibility turn signals and running lamps.

I. 67-001 - \$99

J. Vintage Style Horn Kit

Chromed, horn replacement gives that vintage look to your Chief. Includes cover, horn and bracket.

J. 94-250 - \$299

K. Indian Logo Valve Stem Caps

Add that finishing touch to your Chief's wheels. Set of 4. Also available Indian Logo License plate bolts 80-116 (not shown).

K. 80-114 - Caps-see dealer for pricing

K. 80-116 - Bolts-see dealer for pricing

L. Indian Vintage Style Front and Rear Fender Tips

Chromed, Vintage style tips adds that vintage styling to any Chief.

L. 26-715 - \$199

M. Indian Vintage Style Rear Bumper

Chromed, rear bumper adds style and provides extra protection from an occasional bump.

M. 26-709 - \$149

N. Billet Chrome Front Caliper Cover

Chromed billet aluminum cover shields brake caliper; features Oval Indian logo and cooling air vents.

N. 88-129 - \$199

O. Engine Guards, Front & Rear Set

Chromed, heavy-duty, 1 1/4" tubular guards help safeguard bike and engine.

O. 88-144 - \$529

MSP shows does not include installation.



A



C



E



B

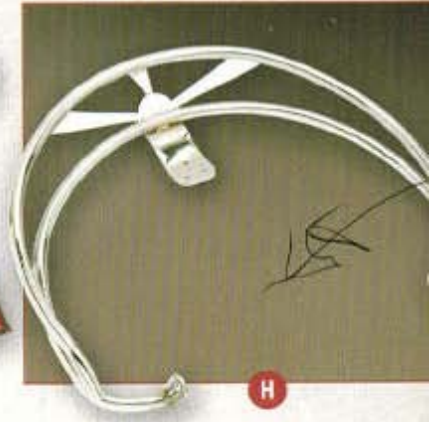


D



F

G



H

A. Ignition Performance Package

Increases torque and horsepower with more aggressive ignition timing includes single point ignition and coil, off-road use only.

A. 94-703 - \$229

B. Alarm System, Chief

Full-featured electronic alarm system, with shock-and motion-sensor, starter interrupter and light/siren actuation.

B. 94-170 - \$299, 02 & Newer
B. 94-172 - \$299, 99-01

C. Disc Wheel Lock with Alarm

Securely locks brake; motion sensor activates siren to deter theft and prevent lock-on departure.

C. 88-147 - \$99

D. Electronic Fuel Injection System

State-of-the-art injection system provides more precise fuel metering for enhanced power, increased driveability and improved mileage.

D. 08-954 - \$1,799

E. Lowering Kit-1.5"

Complete kit includes shorter front-end spring spacers, new stainless-steel shock and new side stand.

E. 88-120 - \$399

F, G. Large and Small Roll-Up Tool Kit

Designed to travel with you on your journey for that extra piece of mind. Comes complete with tools you may need in an emergency situation. Two sizes available, small and large.

F. 80-091 - \$139 Small Kit
G. 80-090 - \$189 Large Kit

H. Chrome Seat Rail-Solo Seat

Sturdy chrome seat rail provides a classic look for your Chief.

H. 65-311 - \$149



I. Leather Back Rest-Chummee Seat
Removable back rest fits into Chummee seat for one-up elegance and two-up comfort.

I. 62-574 - \$249 each

J. Chrome Seat Rail-Chummee Seat
Attractive chrome rail accents seat, provides hand grips around back.

J. 62-573 - \$159

K. Leather Chummee Touring Seat
Tour-ready, long-ride leather dual seat, available in black or brown.

K. 62-572 - \$589



L. Hard Saddlebags with Buckles and Studs
Roadmaster-style hard saddlebags feature chrome buckles, studs and weather-resistant. Sold in pairs with mounting hardware.

L. 62-148 - \$899



M. Leather Saddlebags
Vintage-style genuine leather saddlebags. With belts, buckles and logo conchos. Available with or without fringe in brown or black. Sold in pairs with mounting hardware.

M. 65-315 - \$979-Without Fringe, Brown
M. 65-314 - \$849-Without Fringe, Black
M. 65-317 - \$999-Fringe, Brown
M. 65-316 - \$859-Fringe, Black



N., O. Leather Scoot Boot Luggage Bag and Leather Tool Roll
Vintage-style genuine leather day-trip bag with heavy zippers, straps securely to rear luggage rack (required). Available in brown and black. Vintage-style tool roll fits under headlight assembly. Available in brown or black.

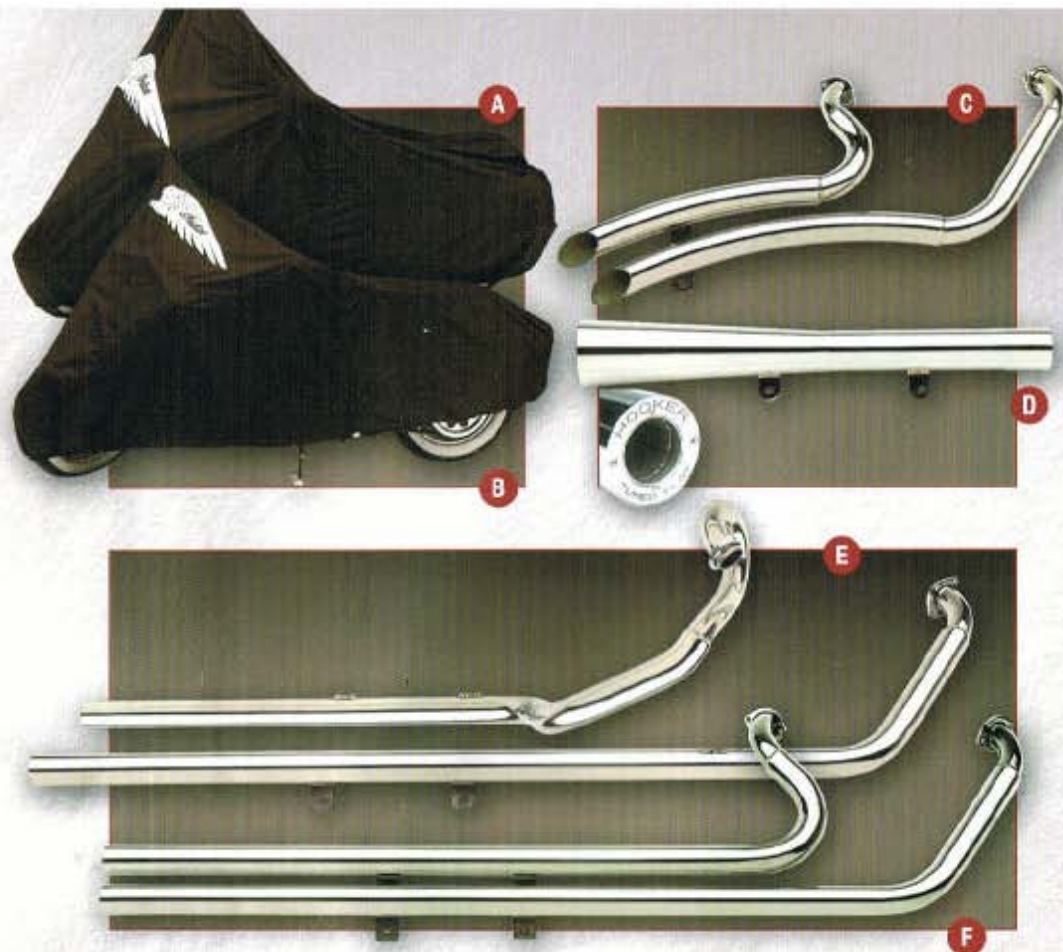
N. 65-318 - \$329-Brown Scoot Boot
N. 65-306 - \$329-Black Scoot Boot
O. 88-152 - \$99-Brown Tool Roll
O. 88-142 - \$99-Black Tool Roll

P. Polished Aluminum Luggage Rack
Vintage-style rear fender rack fits Vintage-style Scoot Boot or holds other luggage securely.

P. 65-326 - \$119



MSP shown does not include installation



A., B. Cover, Chief Roadmaster/Vintage and Chief/Chief Deluxe

Breathable, all-weather fitted fabric motorcycle cover stops incoming water, lets evaporating moisture out.

- A. 88-037 - \$219-Chief Roadmaster/Vintage
- B. 88-036 - \$189-Chief/Chief Deluxe

C. Swan Style Stainless Exhaust

This extreme-custom polished stainless-steel exhaust features sleek, sensuous styling and baloney-cut exhaust tip.

- C. 37-134 - \$629

D. Slip-on Muffler

High performance muffler allows sound/power tuning with tool-adjustable internal valve.

- D. 37-131 - \$429

E. Crossover Stainless Exhaust

Highly-polished dual crossover system routes the rear cylinder gasses over the primary for a unique balanced look.

- E. 37-135 - \$629

F. Dual Stainless Exhaust

High-polished, heavy-gauge stainless duals exit on right side, near end of rear fender.

- F. 37-136 - \$549

2-into-1 Stainless Exhaust (not shown)

A classic two-into-one design, crafted of highly polished, heavy-gauge stainless steel.

- 37-137 - \$599

MSPR shown does not include installation



Indian® Motorcycle "Exotic Color Shop" by Cory Jahromi

Indian Exotic Color Shop custom paint designs are a unique and sophisticated fashion statement for your Indian Chief™ motorcycle. They feature 3-D graphics over a marbled base coat in Candy Apple colors. With only a limited Edition of 50 sets of each style, these will not only prove to be a head turner but are also a smart investment. They are not just paint jobs but works of art with the motorcycle as the canvas.

The styling of these Chief paint designs are created by artists working under the direction of Cory Jahromi. The artist applies four different base colors to achieve maximum depth and purity in design. After the base coats are completed, they are complimented with hand painted black pinstriping and then finished with no less than eight coats of clear lacquer. The results are absolutely stunning.

Each Chief limited edition paint job is accompanied with a numbered certificate of authenticity with production date and a 5 year craftsmanship warranty against peeling, fading, lifting, bubbling or cracking.

A truly unique way to make a statement about your individuality.

See your dealer for available paint options and pricing.

INDIAN RIDERS GROUP™

SOME THINGS ARE JUST TOO GOOD NOT TO SHARE.

RIDING YOUR INDIAN® MOTORCYCLE, FOR ONE.

WHICH IS WHY THE INDIAN RIDERS GROUP™ WAS FOUNDED—TO HELP

YOU GET TOGETHER WITH OTHER INDIAN RIDERS. THE IRG OFFERS A

WEALTH OF BENEFITS FOR ITS MEMBERS, INCLUDING TRAVEL DISCOUNTS,

ROADSIDE ASSISTANCE AND OTHER SPECIAL PRIVILEGES. EACH CHAPTER

IS DEDICATED TO PROMOTING RIDES, GATHERINGS AND CHARITY EVENTS—

AND TO SPREADING THE WORD ABOUT AMERICA'S ORIGINAL MOTORCYCLE.

ASK YOUR DEALER TO FIND OUT MORE ABOUT JOINING—OR CREATING—AN

INDIAN RIDERS GROUP CHAPTER IN YOUR NECK OF THE WOODS.

TO FIND OUT MORE, VISIT WWW.INDIANRIDERSGROUP.ORG.

Indian
RIDERS

CHIEF® SPECIFICATIONS

Engine:	Powerplus™ 45-degree V-twin, black finish, polished fins
Displacement:	100 cubic inches (1639cc)
Bore x Stroke:	3.875" x 4.25"
Compression Ratio:	9.5:1
Ignition:	Electronic, computer-controlled
Valves:	1.94" intake, 1.615" exhaust, hydraulic lifters
Carburetor:	Mikuni HSR 42mm flat-slide
Exhaust System:	Chrome, 2-into-1
Transmission:	Constant-mesh, five-speed
Final Drive:	Aramid reinforced belt
Frame:	High-tensile steel, powder-coated, black
Rake / Trail:	34 degrees / 5.92"
Front Suspension:	41mm, hydraulic compression and rebound damping
Rear Suspension:	Rising-rate, KW single shock with adjustable preload
Brakes:	Stainless-steel 11.5" discs, 4-piston Brembo calipers
Front Wheel/Tire:	60-spoke, chrome, 16" x 3.5", 130/90-16
Rear Wheel/Tire:	60-spoke, chrome, 16" x 3.5", 130/90-16
Wheelbase:	66.4"
Seat Height:	28.5"
Dry Weight:	Vintage: 733 lbs., Chief: 687 lbs., Deluxe: 690 lbs., Springfield: 687 lbs., Roadmaster: 716 lbs.
Fuel Capacity:	5.5 U.S. gallons including 1.2 gallon reserve
Instruments:	Speedometer with digital odometer & tripmeter
Warranty:	12 months/unlimited mileage
MSRP:	CHIEF: \$20,995 U.S. dollars CHIEF SPRINGFIELD: \$21,495 U.S. dollars CHIEF DELUXE: \$21,995 U.S. dollars CHIEF ROADMASTER: \$23,495 U.S. dollars CHIEF VINTAGE: \$24,995 U.S. dollars

Models with pearl paint priced slightly higher.



CHIEF



CHIEF SPRINGFIELD



CHIEF DELUXE



CHIEF ROADMASTER



CHIEF VINTAGE

Indian[®]
AMERICA'S FIRST MOTORCYCLE



INDIAN MOTORCYCLE CORPORATION • 200 EAST TENTH STREET • GILROY, CA 95020

Motorcycles are to be used only on the road by a licensed rider. Obey all local laws and regulations. We recommend that you always wear a helmet, protective clothing and eyewear, and that your passengers do the same. Never ride under the influence of alcohol or drugs. Ride with your headlight on at all times and ride safely. Read your owner's manual thoroughly. We recommend that all riders complete a recognized training program prior to operating a motorcycle.

Some Indian Genuine Accessories are designed for off-road use or for display/show purposes only. Indian motorcycles modified with engine performance parts must not be used on public roads and in some cases may be restricted for closed course use only. Alterations of emission related components constitutes tampering under the U.S. EPA guidelines and can lead to monetary penalties or fines. Installation of any accessory suspension components may affect handling, cornering clearance and kick stand operation, causing loss of control, death or serious injury. Engine guards/highway bars may offer some limited leg and cosmetic motorcycle protection under some circumstances (motorcycle falls over at low speed or stopped position). They are not made for or intended to provide protection from bodily injury in a collision with another vehicle or any other object.

Specifications, availability and prices subject to change without notice. California version differs slightly due to emissions equipment. All prices shown are the Manufacturer's Suggested Retail Price (MSRP). California models priced slightly higher, actual dealer prices may vary.

Indian, Chief, Scout, Indian Spirit, Powerplus, script Indian, Indian Motorcycle, Indian Riders Group, the skirled fender and war bonnet lamp designs and the logo are trademarks and registered trademarks of IMCOA Licensing America, Inc. in the U.S. and Foreign countries. © 2003 Indian Motorcycle Corporation.

FOR MORE INFORMATION PLEASE CONTACT YOUR LOCAL INDIAN MOTORCYCLE DEALER
OR VISIT WWW.INDIANMOTORCYCLE.COM/2003